

# UNLEASHING R&D'S POTENTIAL

2021

---

Introduction



# SHIFT, SPEED, SCALE ON INNOVATION MARKETS

5

## MAJOR DRIVERS OF CHANGE



Products, processes and services are digitalizing at an accelerated speed and with an increased depth



Traditional sectors are disrupted as digital intruders conquer new battlefields



Globalization is reshuffled by new sovereignty and resilience arbitrage



In the search for efficient time to market, Companies' mastery of evolving regulatory landscape becomes critical



Consumer and financial markets are looking now for responsible products & development models

3

## PRIORITIES FOR TOMORROW'S LEADERS



**Shift** to a service mindset in world eaten by software



**Speed up** the game by accessing the right skills at the right time



**Scale** disruptive models to build competitive separation

1

## CALL TO ACTION

**Build new engineering partnerships to unleash the R&D's potential**



# WHO WE ARE

We are **Capgemini's engineering and R&D powerhouse**.

With our 52,000 engineers and scientists worldwide, we unleash the potential of R&D to **help our clients create smart products, operations and services at scale, and, with the rest of the Group, accelerate their journey towards Intelligent Industry.**

With our **deep industry knowledge**, our **cutting-edge technologies in digital and software**, and our **nimble mindset**, we are well positioned to be the strategic partner of our clients in this transformation journey.

## #1

IN ER&D MARKET  
SINCE +30 YEARS



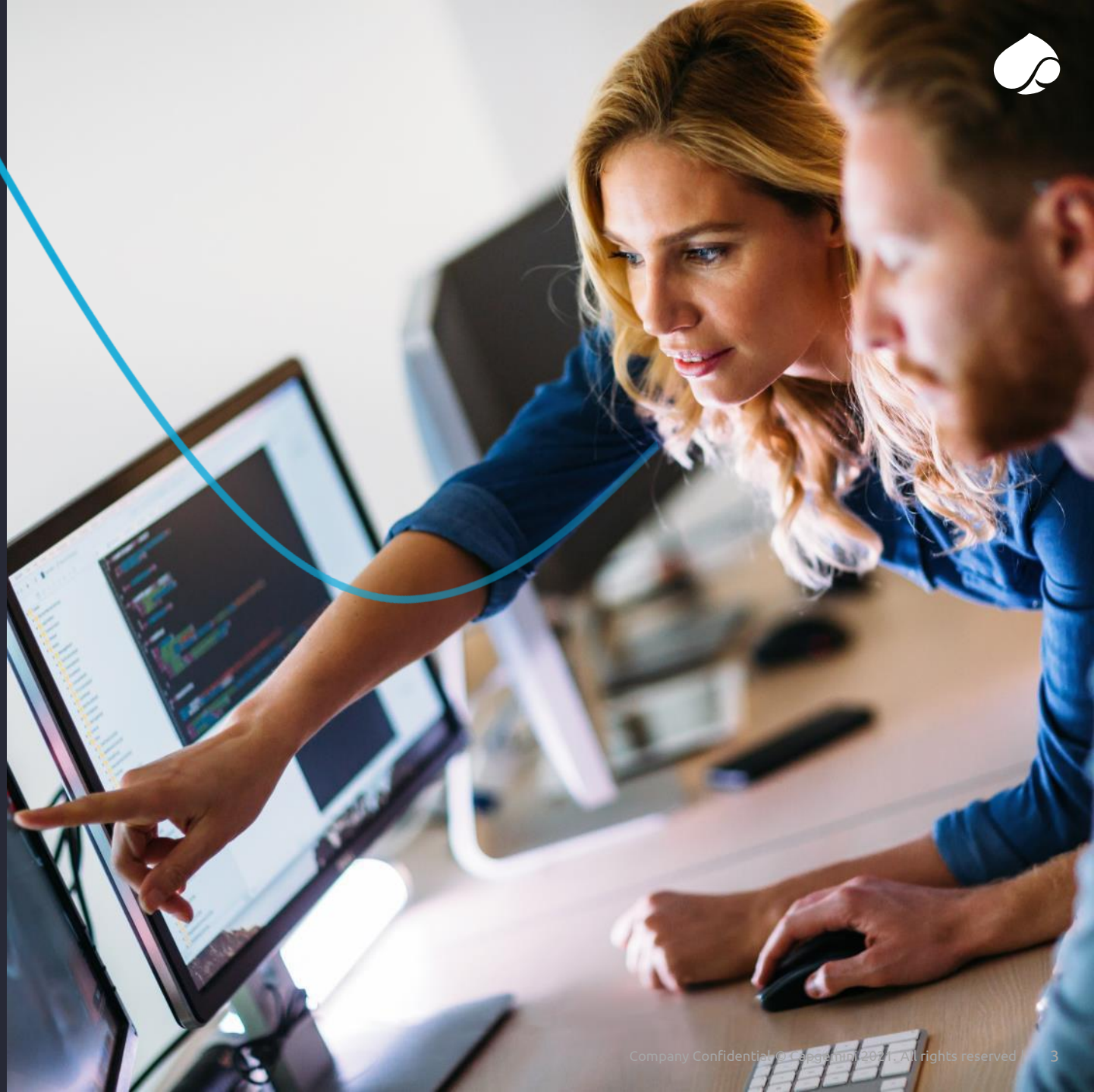
## 52,000

ENGINEERS  
& SCIENTISTS



## 30+

COUNTRIES



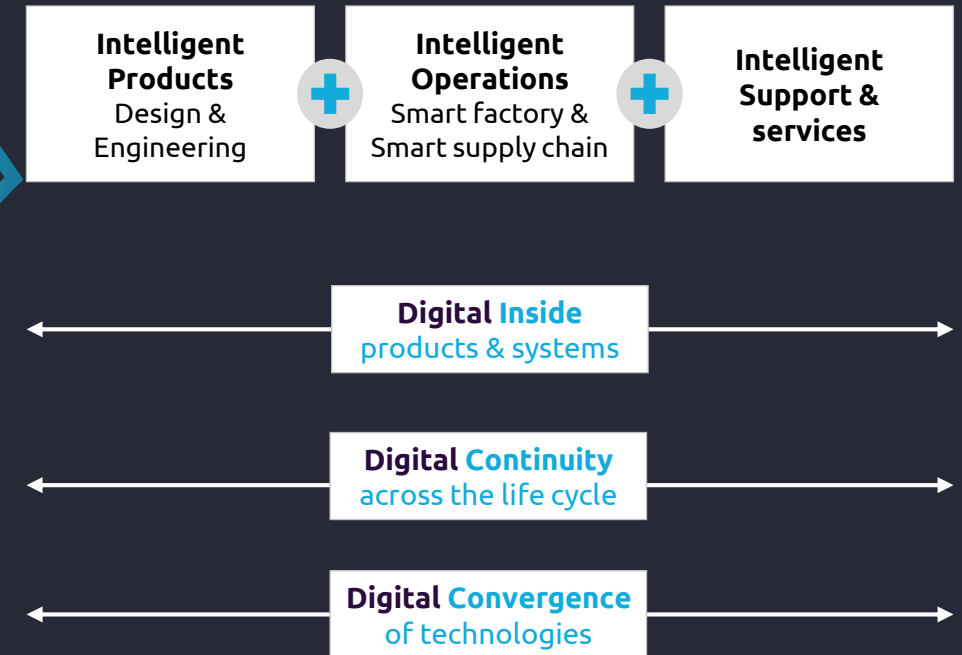


# WE PIONEER THE INTELLIGENT INDUSTRY

“

We foster synergies between the Digital and the Engineering worlds to help any company build intelligent **products**, **operations** and **services** at scale with digital **inside** everything, digital **continuity** throughout lifecycle and digital **convergence** with its ecosystem, allowing the rise of a sustainable Intelligent Industry era. ”

Everything becomes intelligent



Powered By Data & People Centricity



# WE ARE THE LONG-STANDING PARTNER OF INNOVATION LEADERS IN R&D INTENSIVE SECTORS

## 30+

years expertise in product engineering

Ranked as strategic partner by

## 50+

clients

## 2/3rd

Of the top 500 global R&D spenders are clients

### AUTOMOTIVE



### ENERGY



### AERONAUTICS



### LIFE SCIENCES



### SPACE, DEFENSE & NAVAL



### CONSUMER



### RAIL, INFRASTRUCTURE & TRANSPORT



### INDUSTRIAL



# AND THE ER&D PIONEER IN PIVOTAL INDUSTRIES

### COMMUNICATIONS



### SEMICONDUCTOR & ELECTRONICS



### SOFTWARE & INTERNET







# A GLOBAL FOOTPRINT

We are everywhere our clients need us to extend their engineering and transformation capabilities.



Capgemini  
Engineering  
presence

Australia  
Austria  
Belgium  
Canada  
China  
Czech Republic

Finland  
France  
Germany  
India  
Ireland  
Israel

Italy  
Japan  
Luxembourg  
Malaysia  
Mauritius  
Mexico

Morocco  
Netherlands  
Norway  
Poland  
Portugal  
Romania

Slovakia  
South Korea  
Spain  
Sweden  
Switzerland  
Taiwan

Tunisia  
United Arab Emirates  
Ukraine  
United Kingdom  
United States of  
America

## KEY ENGINEERING DISCIPLINES

### Product & systems engineering

- Mechanical & Physical Engineering
- Electrical, Electronics & Semiconductors
- Systems Engineering & Product Design

### Digital & Software

- Software Engineering
- Connectivity & Network Engineering
- Data Science, Analytics & AI

### Industrial Operations

- Manufacturing & Process Engineering
- Operations Management
- Product Support & Services



# DIGITAL & SOFTWARE ENGINEERING

With a unique position at the crossing of tech & industries, we bring together the rarest and most highly skilled experts to help clients grow and seize business transformation opportunities at the continuous speed of today's markets.



We enable the adoption of Digital technologies in the cyber-physical world from design to operations & support through effective implementation of accelerators



We help our clients to capture new markets and business models by accelerating the development of disruptive software products and services



We combine our design-led engineering expertise, software frameworks and outcome-driven business model to modernize core products



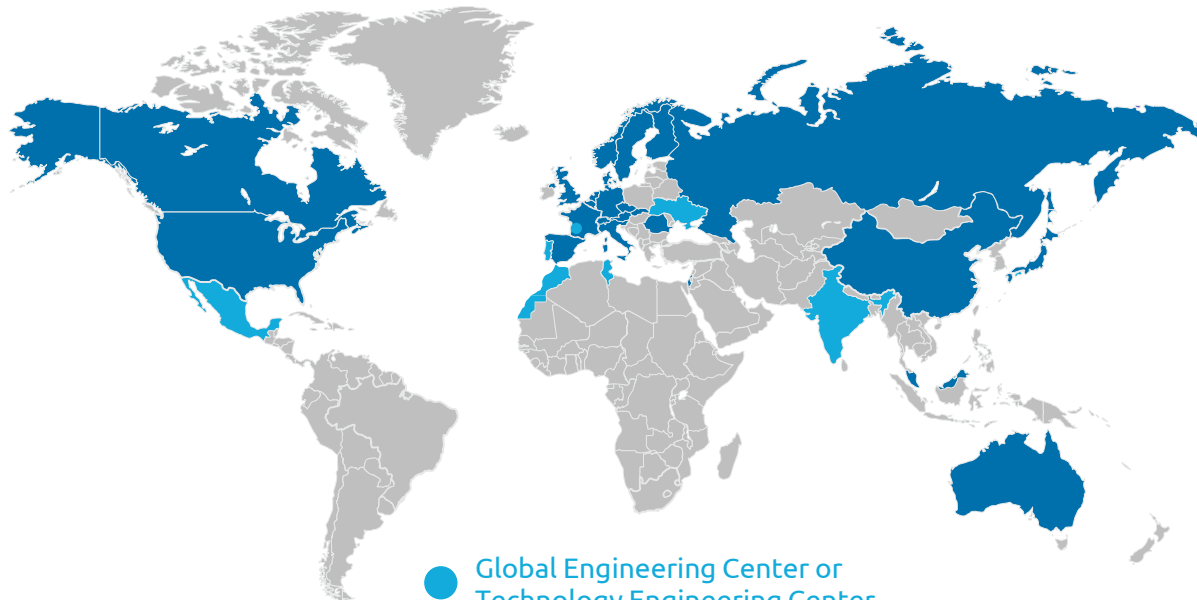


# INDUSTRIALIZED GLOBALSHORE

Our premier Engineering and R&D global delivery platform offers:

- Accelerated, differentiated and **disruptive delivery models**
- Integrated GPO **governance** between front office and engineering centers
- Strong **intimacy** with client organization in their different locations
- Streamline and automate through cross shore leverage, standards, methods and tools
- Proven quality benefits at scale to meet the speed of fast changing markets
- Unmatched cost advantage combined with industry knowledge

## OUR ENGINEERING CENTERS



# 25,000+

## GlobalShore Engineers

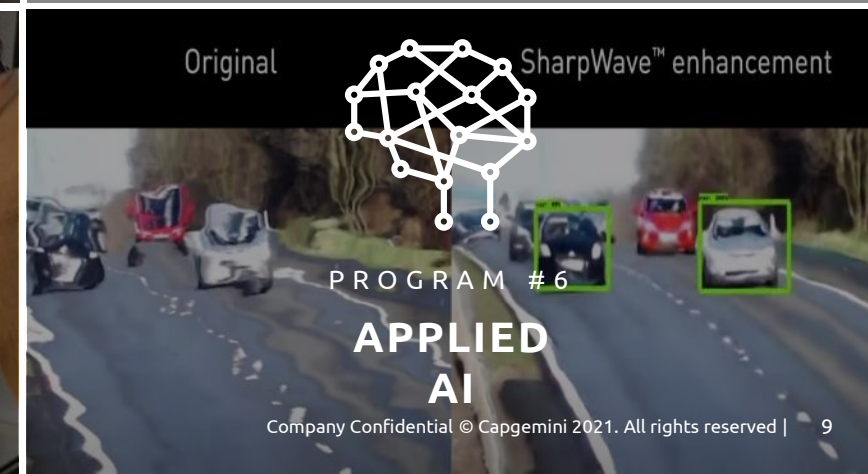
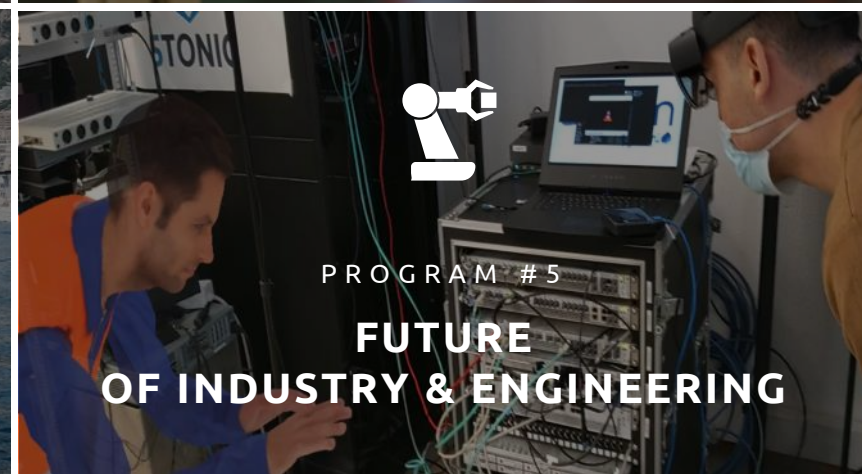
- Connectivity & networks
- Semiconductor
- Embedded software
- Software engineering
- Mechanical
- Testing/Simulation





# EXPLORING THE FUTURE ACROSS SIX MAJOR PROGRAMS

Capgemini Engineering Research & Innovation programs are business accelerators that help clients with high-intensity R&D to prove the value of incremental and disruptive technologies by pioneering engagements built around recognizable assets. Clients go further, faster and to places they would not necessarily go alone.





# SELECTED SUCCESS STORIES



## MAN

We acted as a development partner to **electrify a new generation of trucks** for MAN Truck & Bus AG, from **concept to homologation**, leveraging our expertise in the field of electric mobility and full vehicle development.



## THALES ALENIA SPACE

We helped space engineers show how **augmented reality (AR) and mobile technologies** can improve the crew's **efficiency, accuracy and autonomy** aboard the International Space Station (ISS).



## VODAFONE

**Development and integration of multiple 5G & Edge use cases** covering different industries (consumers, automotive, healthcare, public safety, ...) for Vodafone to **support the creation of smart cities** in Europe.



## STELLANTIS (ex-GROUPE PSA)

We collaborated with Stellantis to create its new mobility solution, the Citroën AMI, a **light electric vehicle** designed to **meet the environmental challenges**.



## GSK

We helped GSK increase innovation, reduce time to market and enhance quality in drug discovery through a **robust analytics and data science partnership**.





# SELECTED SUCCESS STORIES



## BAKER HUGHES

Baker Hughes partnered with us to design and implement an **Industrial IoT solution that transformed shop floor processes**, to provide operators with a new level of insight and the ability to adjust production at a moment's notice.



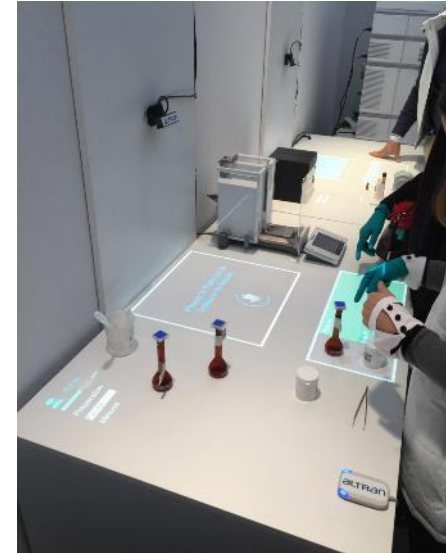
## AIRBUS

We partnered with Airbus to **industrialize the printed electrics technology in aircrafts**. Heavy cable harnesses were replaced and a high automation and customization potential was incorporated.



## HYPERLOOP

We collaborated with HyperloopTT to accelerate the **development of commercialized passenger hyperloop systems** at the HyperloopTT facility in Toulouse, France, the Aerospace Valley of Europe.



## SANOFI

As part of **Sanofi's digital transformation roadmap of manufacturing**, we developed an augmented QC lab to increase the efficiency of operations and the quality of process execution.



## ENGIE

We supported ENGIE in its **Digital Operations Program**, analyzing the potential impact of digital transformation on its industrial assets and operations performance and **defining its long-term digitalization roadmap**.



# WHAT MAKES US UNIQUE

Global leader in Engineering and R&D, Capgemini Engineering supports leaders of each industry to develop the products and services of tomorrow, from concept through industrialization.

- 1 Deep industry expertise
- 2 End-to-end offerings to pioneer Intelligent Industry
- 3 Strategic transformation partner of the innovation leaders
- 4 Unmatched portfolio in Digital & Software engineering
- 5 1<sup>st</sup> Engineering and R&D global end-to-end delivery model
- 6 Strong ecosystem of partners and internal R&I





# RECENT ANALYSTS RECOGNITION OF OUR ER&D SERVICES FOOTPRINT



Recognized as **global leader for ER&D services and IoT Services** in the Zinnov Zones 2020 assessment.

Recognized as undisputed #1 across: **Aerospace, Automotive, Industrial, Medical Devices, Semiconductor, Telecommunications, AI Engineering, ADAS, Telemedicine, and SDN-NFV.**

One of the **top 5 Leaders** across: **Enterprise Software, Telematics, Software Platform Engineering, Cybersecurity, Digital Thread, and AI/ML Engineering for BFSI.**



Positioned in the **leadership zone for Industry 4.0 services** in the Everest Group PEAK Matrix Assessment 2020.

Ranked as **#1** in Everest Group **Engineering Services Top 50™** 2021.





# APPENDICES

## INDUSTRY ID CARDS

# WHAT WE OFFER

## IN AUTOMOTIVE



### DRIVING ASSISTANCE

Safer mobility with efficient ADAS systems  
Smart UX design & development



### MOBILITY EXPERIENCE

Smart user experience design & development



### SUSTAINABLE MOBILITY

Sustainable powertrain and Energy services facing environment constraints



### EFFICIENT ENGINEERING

Engineering complete process & optimisation, and product engineering development



### EFFICIENT OPERATIONS

Efficient manufacturing & supply chain



## AUTOMOTIVE

Safer, smart, sustainable & affordable mobility experience, driven by a deep software transformation



# WHAT WE BRING

**Expertise on complex systems from software and connected services with simulation Frameworks & Platforms:**  
Automation and reuse of data for design and validation (MiL, SiL, HiL, ViL)

**Technological expertise and deep understanding of product engineering,** from powertrain or vehicle body systems to design and class A surfacing.

**Efficient transformational approach** from engineering to operations and sustainable manufacturing processes, including **Product Life cycle Management from product to software.**



# WHAT WE OFFER

## IN AERONAUTICS



### OPTIMISED DESIGN & DEVELOPMENT

Focused on cost reduction & optimisation of Engineering WoW



### NEXT GENERATION AVIATION

Design and development of next generation of Aircraft, Future mobility and new entrants



### INTELLIGENT OPERATIONS

Address the market challenge of agility & efficiency in manufacturing operations



### INTELLIGENT SUPPORT & SERVICES

Co-development of digital services to generate new revenue streams

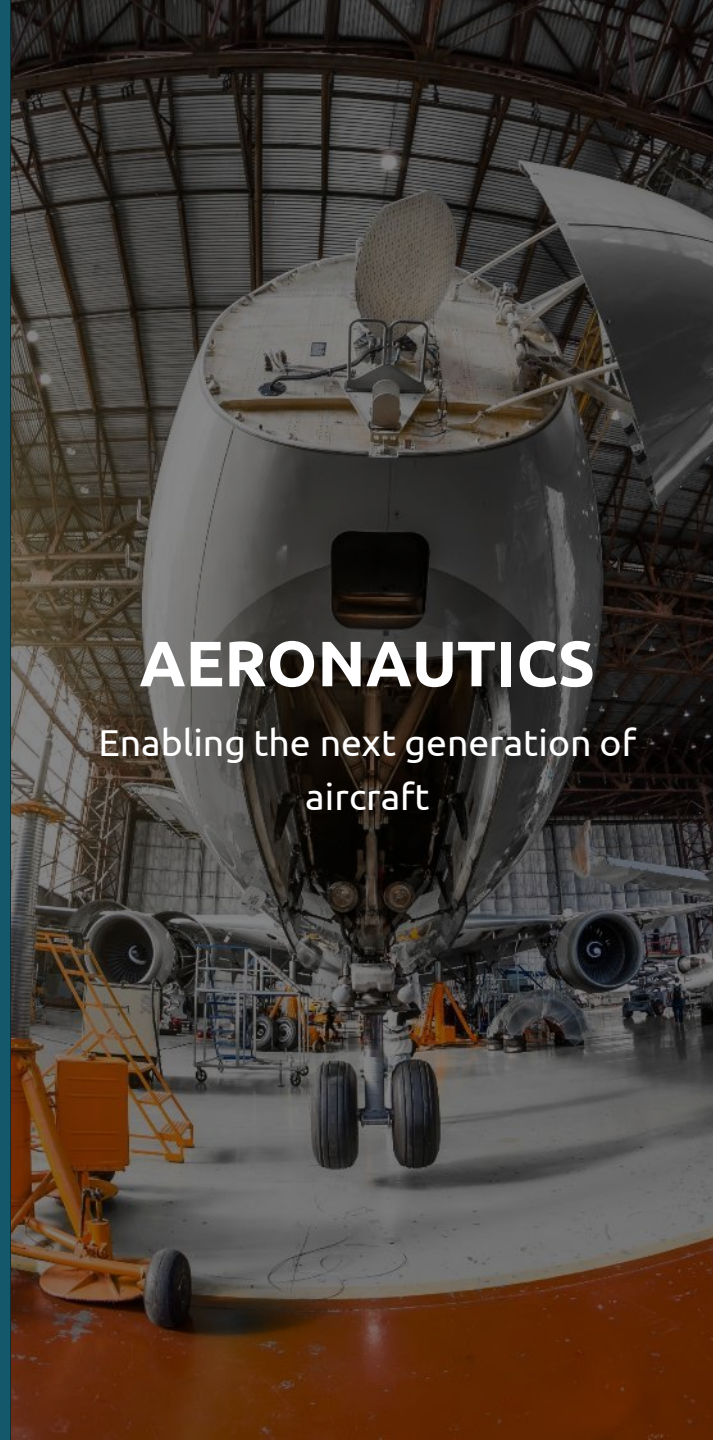


### PERFORMANCE EFFICIENCY ENABLERS

Support OEMs in transformation initiatives to shape the future WoW



### DIGITAL CONTINUITY & DATA DRIVEN ENGINEERING, MANUFACTURING & SUPPORT



## AERONAUTICS

Enabling the next generation of aircraft



# WHAT WE BRING

## Experts in the whole product life cycle

Broad industry expertise and specific skills in modelling and simulation, for the design of production systems and optimization of product lifecycle

## Digital Transformation

We actively invest in accelerators such as AR/VR frameworks, IoT Solutions or DevSecOps platform, tailored for aerospace

## Follow the sun

While ensuring cost optimisation we are capable to deliver locally and in best cost countries thanks to our worldwide engineering centers





# WHAT WE OFFER

IN SPACE, DEFENSE & NAVAL



## FUTURE-READY COMPLEX SYSTEMS

Systems become more and more complex and must integrate future technologies



## EFFICIENT & SECURE ENGINEERING TRANSFORMATION

Implement new engineering methods & technologies while respecting required security levels



## ADVANCED MANUFACTURING

Digitalization of the manufacturing process while respecting the domain security constraints



## INTELLIGENT SUPPORT & SERVICES

Integrate product MCO to the service

# SPACE, DEFENSE & NAVAL

Reconquering outer space  
and facing security challenges



# WHAT WE BRING



Proven expertise in supporting Complex System Engineering including **System of Systems** and **Model Based System Engineering (MBSE)**

## Digital Transformation

We actively invest in AR/VR frameworks, IoT Solutions or DevSecOps platform, tailored for space, defense and naval use cases

Masters of the **High integrity Agile approach** developed over decades of experience delivering highly critical systems in the most demanding industries



# WHAT WE OFFER

IN RAIL, INFRASTRUCTURE & TRANSPORTATION



## INTELLIGENT TRAIN

Design, test, and support of trains, embracing the digital lifecycle



## SIGNALLING, COMMAND & CONTROL SYSTEMS

Development and integration of critical, autonomous and train control systems



## INTELLIGENT MANUFACTURING & OPERATIONS OF SYSTEMS

Advanced tools & process to the manufacturer; and advanced systems and support to the operator



## SMART B2B & B2C RAIL SERVICES

Intelligent and transformative services to the passenger, operator, and manufacturer

# RAIL, INFRASTRUCTURE & TRANSPORTATION

Bringing innovation to mobility  
technologies & passenger  
services



# WHAT WE BRING

Innovative solutions that use **2D & 3D CAD modelers** and predictive tools such as FEM solvers

Cutting edge expertise in mobility solutions **including autonomous freight transport systems**

**Independent safety and conformity assessment services** for rail applications and products worldwide (ISA, AsBo, NoBo, DeBo)



ALSTOM





# WHAT WE OFFER

## IN ENERGY



### CAPEX EXCELLENCE

Design and delivery of physical and digital assets enabling lifecycle data capture and sustainable goals achievements



### OPERATIONS PERFORMANCE

Shift Operation & Maintenance performance in a safer & more sustainable environment



### SMART SERVICES

Create & deliver new platforms & services generating lifecycle values for Energy players

## ENERGY

Global engineering & digitalization player empowering Energy transition

# WHAT WE BRING



Global **multi-disciplinary engineering expertise** combined with deep domain knowledge to support the **Energy transition** leveraging **dedicated expertise centers** in wind and solar renewable energies and nuclear

**Digital accelerators and technology frameworks** to optimize the energy value chain performance (Digital Twins, IoT, Smart grids, 5G ...) built from **cross industry fertilization**

Leading edge in-house **Research & Innovation program** developing disruptive technologies and solutions (H2, Small Modular Nuclear Reactors, sustainability...) **for the Future of Energy**



# WHAT WE OFFER

## IN LIFE SCIENCES



### SMART PRODUCTS & SYSTEMS DEVELOPMENT

End-to-end development and Life Cycle Management of medical devices and digital health systems incl. platforms, AI etc. Advanced data-driven solutions, agile processes & automation improving R&D efficiencies and accelerating time-to-market



### INTELLIGENT OPERATIONS

Tailored solutions leveraging advanced digital and automation technologies to achieve quantified performance improvements for Biopharma and Medtech Manufacturing and Supply chains



### AGILE COMPLIANCE

Best-in-class consulting and managed services to improve performance, quality and regulatory compliance leveraging digitalization

## LIFE SCIENCES

Empowering the next generation  
of healthcare



## WHAT WE BRING

Global footprint with **+3000 specialists with deep Life Sciences domain knowledge** combined with advanced & cross industry technologies expertise , delivering scalable & tailored data-driven solutions

**Innovation catalyst** at the heart of the ecosystem with leading edge in-house **R&I program with +40 projects** developing solutions for the Future of Healthcare

Worldwide Life Sciences expertise center for **Compliance & Business Performance** with extensive process and regulatory knowledge (GxP, CFR, ICH, ISO...)



SANOFI

Boston  
Scientific

TERUMO

# WHAT WE OFFER

## IN INDUSTRIAL & CONSUMER



### PRODUCT INNOVATION & SYSTEM ENGINEERING

End-to-end services for designing, developing and engineering products and enabling their supply chain



### INTELLIGENT OPERATIONS

Smart manufacturing techniques and technologies to improve factory efficiency, productivity and safety



### CONNECTIVITY & OT SECURITY

Design, development, deployment, and transformation of new and legacy industrial connectivity, networks and OT security

## INDUSTRIAL & CONSUMER

Helping clients develop products, transform manufacturing and operations and improve operational agility

# WHAT WE BRING



**Ranked #1 (Zinnov) in Industrial ER&D services in 2020**

**Dedicated centers focused on advanced technology solutions** for manufacturing, AI/ML, digital twins, data & analytics, cloud & edge, networking, cybersecurity, and more

**125+ licensable software frameworks to accelerate development of industrial products & networks**

Whirlpool  
CORPORATION

VANDERLANDE ABB

RioTinto



# WHAT WE OFFER

## IN COMMUNICATIONS



### VIRTUAL NETWORK FOUNDATION

Transformation to Hyper-Scaler -  
Virtualized Networks & Cloud  
Network & Compute Product & Service  
Development  
Network & Product Support Services



### 5G MARKET ADOPTION

Software Frameworks Solutions  
Communications System Integration  
Intelligent 5G & Edge



### DIGITAL TRANSFORMATION & AUTOMATION

Advanced Connectivity for Industries –  
Private networks  
Optimized Engineering & Automation



## COMMUNICATIONS

Generating new revenue streams  
in a connected world



## WHAT WE BRING

**5G field experience with +120 5G projects since 2019**, supporting Telco & industrial players with transformative use cases

**125+ licensable software frameworks** which enable our clients to reduce development time up to 60%

**A unique set of 5G Labs & Advanced Networks Center of Excellence** to support our clients around the globe



# WHAT WE OFFER

## IN SEMICONDUCTOR & ELECTRONICS



### SILICON ENGINEERING

Design, implementation and validation of ICs, IP and the software, boards and system hardware needed to prepare chips for product development



### EMBEDDED SYSTEM & PRODUCT ENGINEERING

Complete engineering services for embedded software, hardware and electronic products to accelerate deployment in end markets



### PRODUCT LIFECYCLE SERVICES

Value engineering (chip, platform, product) and support services to maximize the lifetime revenues and margins of a product, product line, or service

## SEMICONDUCTOR & ELECTRONICS

Helping clients balance speed, agility, innovation and ROI



## WHAT WE BRING

The world's largest **VLSI ER&D services workforce** with experience and expertise in advanced SoC geometries down to 5nm

**Ranked #1 (Zinnov) in Semiconductor ER&D services** for last 5 consecutive years

**Unmatched vertical breadth** brings industry knowledge, use case expertise, customer intimacy, and ecosystem relationships to chip design projects, informing solution design and expediting time to market





# WHAT WE OFFER

## IN SOFTWARE & INTERNET



### STRATEGY & DESIGN

Help companies become cloud native by migrating to microservices to enable Platform & API driven development



### SOFTWARE INNOVATION AT SCALE

Agile cloud native development teams optimize cloud stacks, deal with petabyte scale big data and operationalize machine learning via MLOps



### PRODUCT TRANSFORMATION

Extend and renew software product lifecycles  
Develop connected or immersive solutions which will work in consumer, business and regulated environments

## SOFTWARE & INTERNET

Global partner empowering the next generation of software & internet

# WHAT WE BRING



### Fast & Agile start-up culture

Born in the silicon valley, our software is based on start-up mindset, spirit and speed

### Technology leadership &

demonstrated mastery of cloud, SaaS, IoT & AI technologies and applications

### Groundbreaking engagement models:

Agile teams that can scale up and scale down; no long-term commitments





This presentation contains information that may be privileged or confidential and is the property of the Capgemini Group.

Copyright © 2021 Capgemini. All rights reserved.

## About Capgemini Engineering

Capgemini Engineering combines, under one brand, a unique set of strengths from across the Capgemini Group: the world leading engineering and R&D services of Altran – acquired by Capgemini in 2020 - and Capgemini's digital manufacturing expertise. With broad industry knowledge and cutting-edge technologies in digital and software, Capgemini Engineering supports the convergence of the physical and digital worlds. Combined with the capabilities of the rest of the Group, it helps clients to accelerate their journey towards Intelligent Industry. Capgemini Engineering has more than 52,000 engineer and scientist team members in over 30 countries across sectors including aeronautics, automotive, railways, communications, energy, life sciences, semiconductors, software & internet, space & defence, and consumer products.

Capgemini Engineering is an integral part of the Capgemini Group, a global leader in partnering with companies to transform and manage their business by harnessing the power of technology. The Group is guided every day by its purpose of unleashing human energy through technology for an inclusive and sustainable future. It is a responsible and diverse organization of 270,000 team members in nearly 50 countries. With its strong 50-year heritage and deep industry expertise, Capgemini is trusted by its clients to address the entire breadth of their business needs, from strategy and design to operations, fueled by the fast evolving and innovative world of cloud, data, AI, connectivity, software, digital engineering and platforms. The Group reported in 2020 global revenues of €16 billion.

Get the Future You Want | [www.capgemini.com/capgemini-engineering](https://www.capgemini.com/capgemini-engineering)