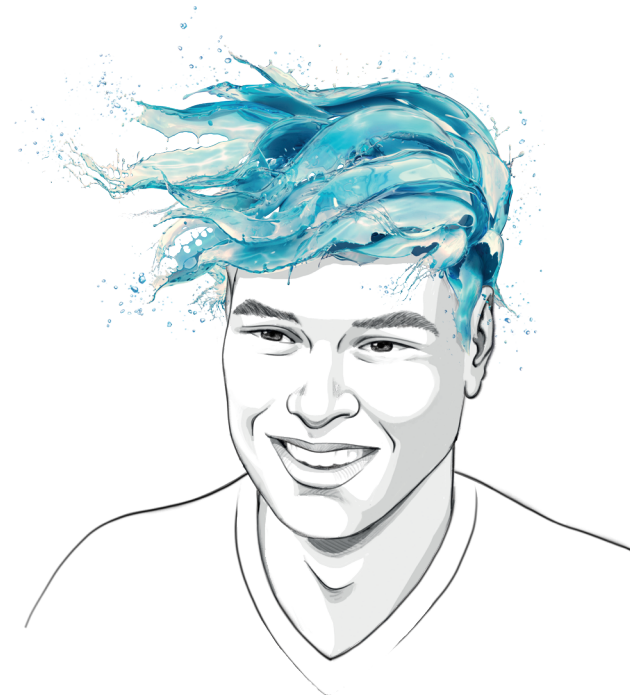




Have you got
a **chemistry**
degree?
Find out more.



Junior R&D analyst

Designs, plans and follows the testing activities within Eni projects in collaboration with the internal and external multidisciplinary work team. Also assists in the drafting of project specifications in collaboration with laboratories and research bodies: contexts where multiculturalism has always been recognized as a valuable attribute.

Flow assurance analyst

Performs studies on all aspects of flow assurance for the transport of products in junction lines and pipelines. Also performs simulations in order to identify the key flow assurance parameters of a production/export system, identifying potential prevention strategies to be adopted. Performs work collaborating within international and challenging teams.

Renewable sources chemical researcher

Develops experimental activities in the field of chemical research from renewable sources. Also provides the setting up of experimental tests and their implementation ensuring the validity of the methods and the significance of the results. Gives its professional contribution in coherence with the requirements defined together with an international team.

New materials researcher

Conducts research on new materials. Follows experimentation with commitment and passion, starting with bibliographic research, planning, execution, collection, and ending with data processing and reporting.

Polymers technician

Deals with the analysis and synthesis of chemicals, additives, polymers and new formulations, actively participating in the organization of experimentation. Pays attention to the sustainability of processes, reagents and synthesis products, contributing to Eni's commitment for a future with a reduced impact on the environment.

Junior investment analyst

Deals with the analysis and evaluation of new investments (concerning the purchase of capital equipment for plants, adaptations to regulations or optimization of consumption). Participates in the development of projects such as acquisitions of company branches or joint ventures, contributing to the development of economic evaluation models and business plans. Plays a strategic role for Eni in collaboration with an international and flexible team.

